



green point  
TBL NEKRETNINE

BROJ  
SPAVAĆIH  
SOBA

1

KORISNA  
POVRŠINA

47,07m<sup>2</sup>

SPRAT STAN

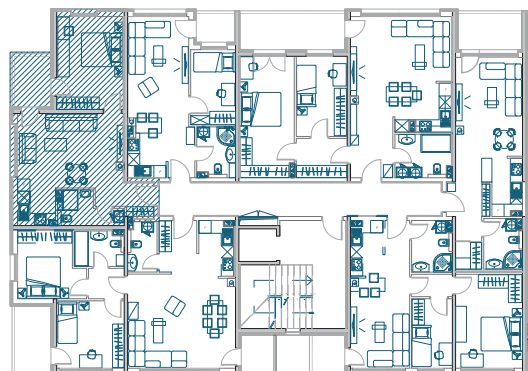
PR

I 7

II 13

III 19

IV 25



|                              | POVRŠINA<br>PODA          | koef. | KORISNA P.                |
|------------------------------|---------------------------|-------|---------------------------|
| Hodnik                       | 2.24m <sup>2</sup>        | 1     | 2.24m <sup>2</sup>        |
| Kuhinja                      | 3.34m <sup>2</sup>        | 1     | 3.34m <sup>2</sup>        |
| Dnevni boravak<br>trpezarija | 20.17m <sup>2</sup>       | 1     | 20.17m <sup>2</sup>       |
| Kupatilo                     | 4.19m <sup>2</sup>        | 1     | 4.19m <sup>2</sup>        |
| Spavaća soba                 | 14.91m <sup>2</sup>       | 1     | 14.91m <sup>2</sup>       |
| Lođa                         | 4.43m <sup>2</sup>        | 0.5   | 2.22m <sup>2</sup>        |
| <b>UKUPNO:</b>               | <b>49.28m<sup>2</sup></b> |       | <b>47.07m<sup>2</sup></b> |

