



greenpoint
TBL NEKRETNINE

GARSONJERA

KORISNA
POVRŠINA

34,11m²

SPRAT STAN

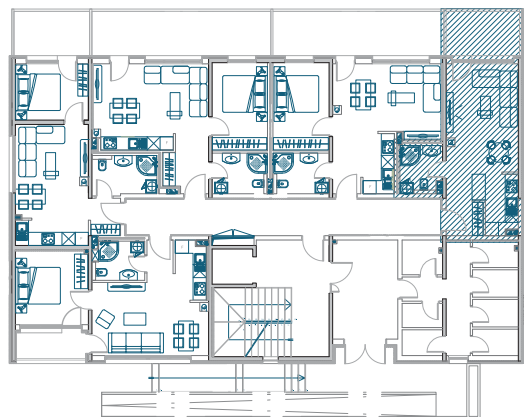
PR 5

I

II

III

IV



	POVRŠINA PODA	koef.	KORISNA P.
Hodnik	2.55m ²	1	2.55m ²
Kuhinja	4.00m ²	1	4.00m ²
Dnevni boravak +trpezarija	8.43m ²	1	18.43m ²
Kupatilo	4.07m ²	1	4.07m ²
Lođa	6.75m ²	0.75	5.06m ²
UKUPNO:	35.80m²		34.11m²

